



SITE PLAN

In 2006 Nick Hyams and his team were commissioned by G4S on behalf of Bridgend Custodial Services, the operating company for HMP & HMYOI Parc to develop proposals to increase the population of the prison by upto 500 adult males.

Proposals were submitted to Her Majesty's Prison Service, now the Ministry of Justice for a new House unit and extensions to the Amenities and Visits Buildings as well as refurbishments to the Entry, Kitchen and Services Buildings to provide additional regime space and support the increased population.

Overall cost of the project is in the order of £55 million with construction work complete by the Spring of 2011.



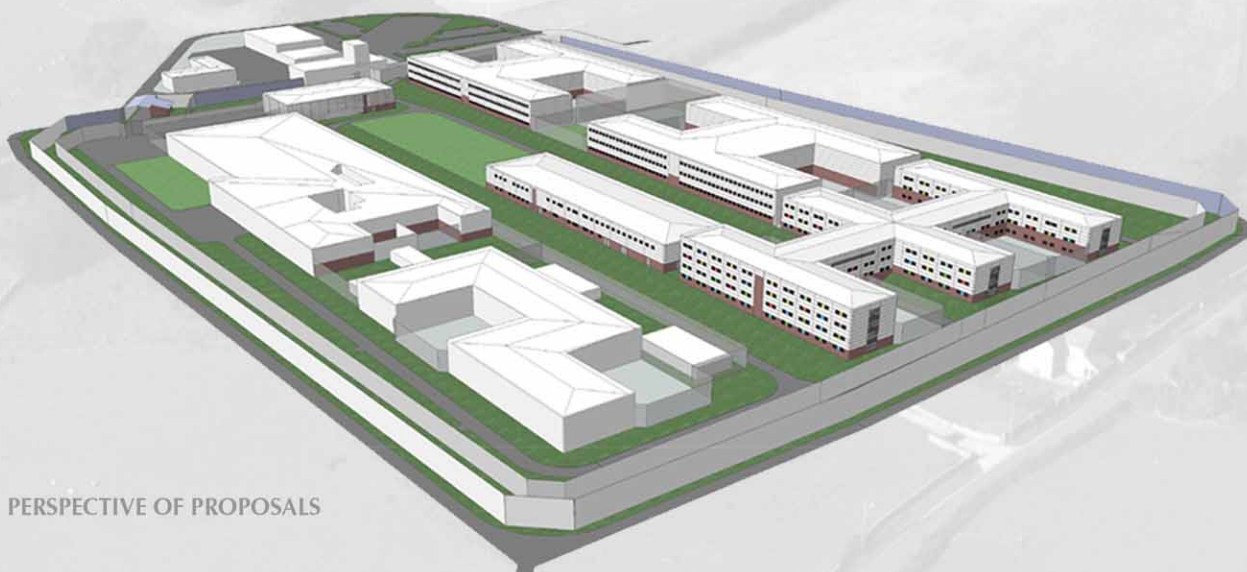
VISITS BUILDING REURB & EXTENSION



PROPOSED HOUSEBLOCK LONG SECTION



PROPOSED HOUSEBLOCK ELEVATION



PERSPECTIVE OF PROPOSALS